

PRODUCT INFORMATION PACKET



Model No: A145K17NB2A

Catalog No: A009595.00

..2HP..1725RPM.145T.TEAO.230V.1PH.60HZ.CONT.40C.1.0SF.RIGID.U145K17NBA.....

Agricultural



Regal and Leeson are trademarks of Regal Beloit Corporation or one of its affiliated companies.

©2018 Regal Beloit Corporation, All Rights Reserved. MC017097E





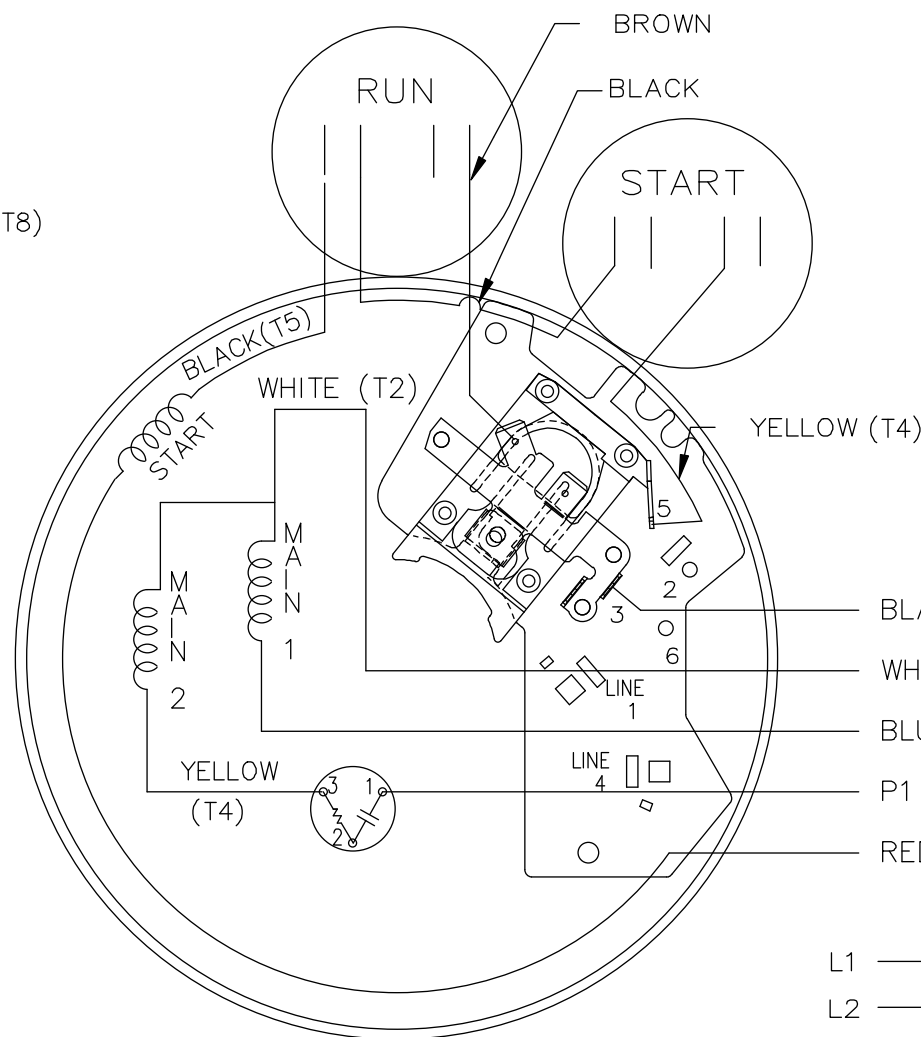
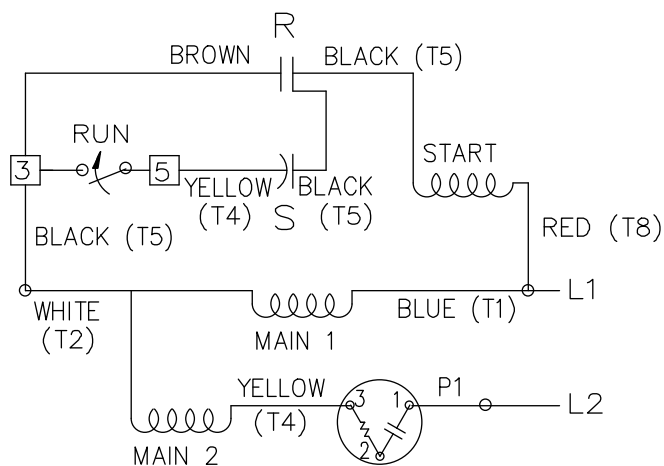
Nameplate Specifications

Output HP	2 Hp	Output KW	1.5 kW
Frequency	60 Hz	Voltage	230 V
Current	9.2 A	Speed	1749 rpm
Service Factor	1	Phase	1
Efficiency	81.6 %	Duty	Continuous
Insulation Class	B	Design Code	L
KVA Code	J	Frame	145
Enclosure	Totally Enclosed Air Over	Overload Protector	Automatic Lock Rotor Only
Ambient Temperature	40 °C	Drive End Bearing Size	6205
Opp Drive End Bearing Size	6203	UL	Recognized
CSA	Y	CE	N
IP Code	43		

Technical Specifications

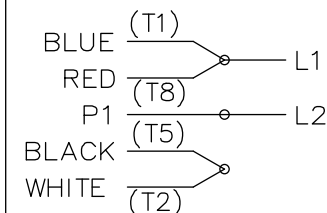
Electrical Type	Capacitor Start Capacitor Run	Starting Method	Across The Line
Poles	4	Rotation	Selective Counterclockwise
Mounting	Rigid base	Motor Orientation	HORIZONTAL
Drive End Bearing	BALL	Opp Drive End Bearing	BALL
Frame Material	Rolled Steel	Shaft Type	NEMA 56
Overall Length	13.49 in	Frame Length	9.56 in
Shaft Diameter	0.875 in	Shaft Extension	2.25 in
Assembly/Box Mounting	F1 ONLY		
Outline Drawing	A-108106-956	Connection Diagram	A-102006_58_LE

HIGH VOLTAGE C.C.W.



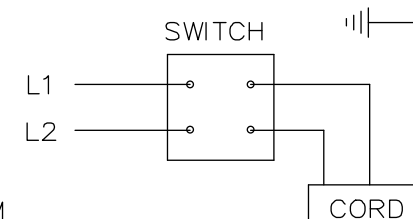
HIGH VOLTAGE CAPACITOR START OVERLOAD SELECT ROTATION.

HIGH VOLTAGE C.C.W. ROTATION




FOR C.W. ROTATION INTERCHANGE RED(T8) AND BLACK(T5) LEADS

- BLACK (T5)
- WHITE (T2)
- BLUE (T1)
- P1
- RED (T8)



NOTE: USE T TERMINALS WHEN CALLED IN BOM

		TOLERANCES UNLESS SPECIFIED		 ELECTRIC MOTORS GEARMOTORS AND DRIVES	DRAWN HLB 04-28-2004					
		DEC.	INCHES		CHK	ML 05-04-2004				
		.X	± -		APPD	GK 05-04-2004				
		.XX	± -		SCALE	5=8				
		.XXX	± -		REF					
01	ADDED T TERMINAL	UD	09/27/13	MA	.XXXX	± -	MAT'L.	FMF	CN 38017	
NO.	REVISION	BY & DATE	CHK	ANG	± -	FINISH		PREV		
THIS DRAWING IN DESIGN AND DETAIL IS OUR PROPERTY AND MUST NOT BE USED EXCEPT IN CONNECTION WITH OUR WORK ALL RIGHTS OF DESIGN AND INVENTION ARE RESERVED THIS IS AN ELECTRONICALLY GENERATED DOCUMENT - DO NOT SCALE THIS PRINT				RFP	CAD FILE 102006_58_le			SIZE	DRAWING NO. PAGE OF	REV.
				DIST				A	102006-58-LE	01

